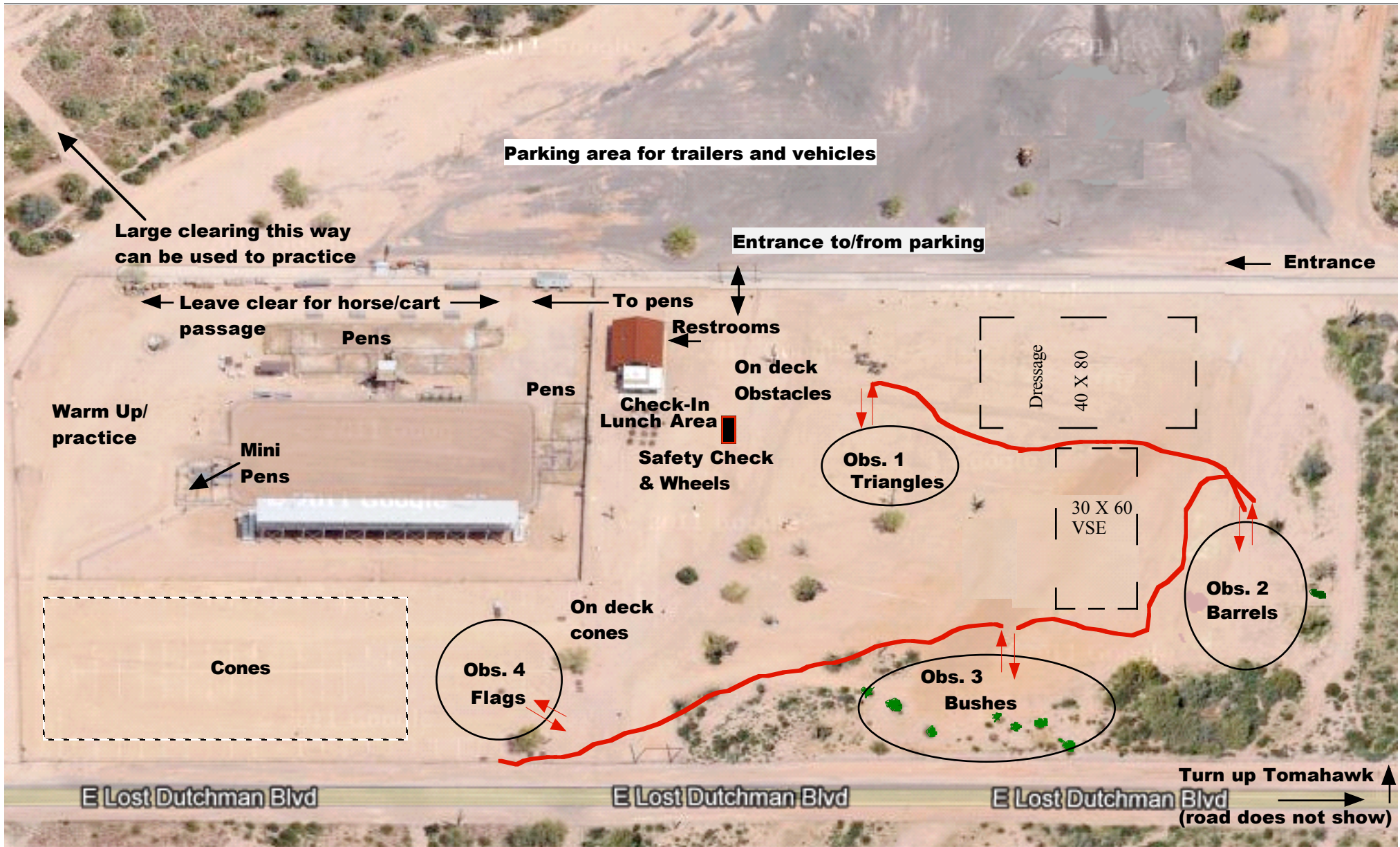


2025 ADT #3 and #4 at Apache Junction



Grounds Map

TRAILERS CAN BE PARKED INSIDE THE PENS AREA IF THEY ARE NEAR THE FENCE (PARALLEL AND DO NOT BLOCK HORSES AND CARRIAGES FROM GETTING THROUGH THE AREA. DRY CAMPING ONLY. USE OF POWER ONLY FOR MEDICAL REASONS AND PLEASE NOTIFY SECRETARY IF YOU NEED TO PLUG IN. BRING HOSES TO REACH WATER SPIGOTS.